

Joyce Garner documents her rich inner world (a world of acrobats, wanderers, animals, magic, city and forest) in large, vividly-pigmented surrealist paintings. Garner has had fourteen solo exhibitions of her work since 1991. She co-initiated and developed three extensive collaborative projects (“Ladies’ Lunch”, “The Marriage Project”, and “Yes We Both Paint—a Mother-Daughter Collaboration”) and traveled to Northern Ireland to participate in a project (“Links That Connect Us”) in which she worked collaboratively with Belfast painter Ray Duncan. More recently she founded an open studio with textile artist Denise Furnish in the center of Louisville KY’s gallery district. Through this effort, visitors have access to her creative process.



Joyce is a self-taught artist. The painterliness and scope of her work reflects deep study of various forerunners – Cassatt, Matisse, Picasso, Chagall. More contemporary influences are Grace Hartigan, Paula Rego, Juan Muñoz, and Roy DeForest. Her ambitions for her work are shaped by how she uses art in her personal life; she prefers art which rewards extended meditative contemplation. “I love to sit in front of a piece in the mornings with a cup of hot tea in my hands, and let my mind go. I want art that gives me a place to go.” Her paintings move and refresh the viewer’s eye with evocative details, veiled layers of paint, and patterns that undulate.

A native Kentuckian, Joyce’s earliest influences were American pop culture (television, comics, and coloring books), fairy tales, children’s novels such as *Alice in Wonderland*, Appalachian craft traditions and the lamplit realities of rural living. Joyce describes her work as “a world of my own making. I can enter in and really spend time there. And when I’m in the painting, it feels like magic.”

A Joyce Garner

Bestiary & Lexicon\*

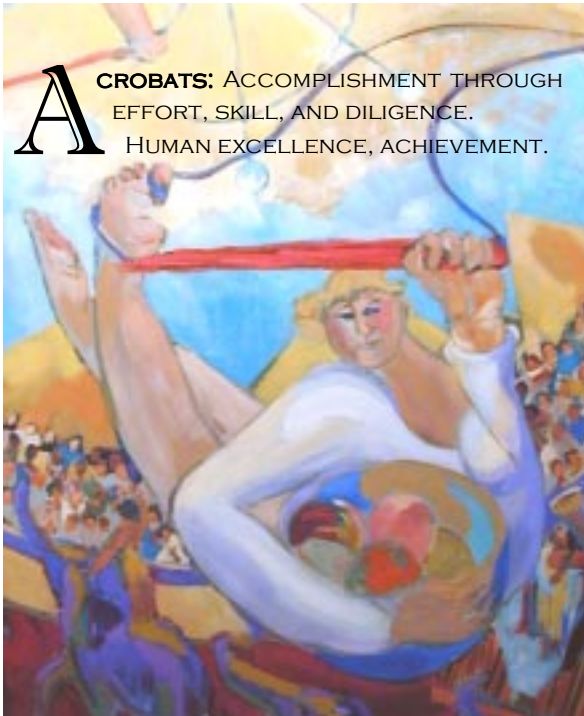
# A TRAVELER'S GUIDE

## TO AN OFF-KILTER FAIRYLAND

**BOATS & ARKS:** WHERE THE SPIRITUAL LIFE TAKES PLACE; THE VESSEL OF OUR INNER LIVES.



WHAT GOES AROUND COMES AROUND...  
MEANWHILE, EVERYONE HAS UPS AND DOWNS.





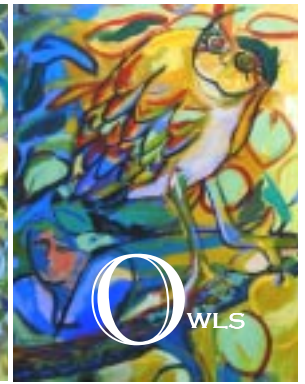
# G INGHAM THE S EA

A MAGICAL PLACE, WHERE THE  
REGULAR RULES DO NOT APPLY.



# O THE RCHARD

THE SOURCE. WHERE  
LIFE'S BOUNTY IS  
DEVELOPED, TENDED.  
THE ORIGINAL PLACE  
AND TIMELESS MOMENT.



# O WLS

THE WISDOM OF KEEN,  
PENETRATING  
OBSERVATION. NIGHT  
VISION.



# G IRAFFES PERSPECTIVE.

SEEING FORWARD AND BACKWARD IN TIME.



# R ABBITS

NATURE, BURGEONING OUT  
OF CONTROL. THE URGENT  
NECESSITY FOR BALANCE.  
THE STRUGGLE FOR  
DYNAMIC EQUILIBRIUM.



TRUTHTELLERS.  
WITNESSES.

# J OKERS J ESTERS

THE SMALL STILL  
INTUITIVE VOICE.  
THE CONSCIENCE.

# H ARLEQUINS



# THE T ILTED C ITY

THE EVER-OFF-KILTER  
ENVIRONMENT CONSTRUCTED  
BY HUMANS. OFTEN  
JUXTAPOSED TO NATURE.



THE  
**C**IRCUS: THE ARENA OF HUMAN  
 DOINGS AND STRIVINGS.



FAIRY GODMOTHERS  
 WINGED FIGURES

CARETAKERS, WITH  
 MESSAGES OR BLESSINGS.



**C**LOUDS: CLOUD NINE.  
 HAPPINESS; HUMOR.



**F**LOWERS:  
 CHANGING  
 WITH THE  
 SEASONS, THEY  
 TELL THE TIME OF  
 YEAR.



**D**OGS: COMPANIONS. GUARDIANS.  
 SENTRIES. ALSO THE SPIRIT OF  
 PLAYFULNESS.



FRUIT  
 BOWLS

THE BOUNTY  
 OF LIFE.  
 THANKSGIVING.  
 OFFERING.